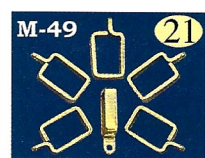




ZLW-104CL

Solid Brass, Victorian style swing curtain rods

ZLW-104CR



M-49 21

We have reproduced a very fine swing out, curtain rod. Closed it is 18" long (13" curtain area), extends to 28" (22" curtain area). Ht: 3 1/2" Wall bracket extends out 3 1/2" & has rod stop to prevent the rod from banging into the window. Bracket footprint: 4" tall x 3/4". We made improvements like spring ball bearing stops every 1/2"; leveling rivets to help prevent sagging when extended; all solid brass construction instead of plated steel. Lost Wax Castings for finest detail. A rod has 6 rings, plus one fixed one at the end of the rod. **M-49** Solid brass curtain rings for antique, swing out extension curtain rods (or extra ones for ours). Inside: 1/2" wide x 7/8" tall. Pk of 6.



M-60F finial

ZLW-177CR M-60F

Now here is a very nice curtain hanging solution.

Lost Wax cast ZLW-177CR curtain end which has a hole to accept 1" dia curtain rods. It can be made bigger up to 2" by drilling a larger hole.

This back has two slot mounting plates-invisible when installed. It meas:

7" tall; protrudes 6 3/4" (4 1/2" from the wall to center of the hole); 1 1/4" wide Very lovely rococo victorian look.

M-60F is a solid heavy-brass ball finial that fits into our 1" brass tube. It is a friction fit. Both parts sold separately to use with other components.

ZM-1872T is our 1" dia, 6ft brass tube for curtains.



ZC-974

ZC-9928

ZC-9813

ZC-9852

True "Antique color" Extra large, tie Backs .note key for comparison of size

ZC-974 3 color: light gold; dark gold and black. Restrained; elegant colors works with many colors.

ZC-9928 3 color: light gold; port wine; moss green. Just lovely quality to behold on contrasting curtains.

ZC-9813 3 color: sky blue, dusty rose and black. Cannot look any more antique than this one does-nice

ZC-9852 3 color: true blue, red: light gold. Very lively.

All tassel sizes are 9" long. Overall length: 27"

Two ropes (after the knot) form a 8" diameter circle, except 9928 which forms a 12" circle.

When choosing, aim to contrast, not match and you will be very satisfied. Best quality Rayon.



ZM-1872 Fine 1" dia shower curtain solid brass tube...6 ft long that comes complete with twelve 2 1/2" dia solid brass curtain rings and hooks to attach to the curtain. Also comes complete w/-two solid brass end mounting flanges. Can't rust! This brass rod can also be used for all room curtains. Naturally this shower rod can be trimmed to the perfect length with a hacksaw. We have even seen this rod used inside antique wardrobes with and without the curtain rings. We can change the flange ends (T-R3) for T-R1 if needed at slight extra cost.

T-R1 & T-R2 ends for the curtain rod 1872 or any 1" dia; round rod. If you need this kind of mounting application, we can substitute this type of end for the flush wall mount type flange end on ZM-1872.

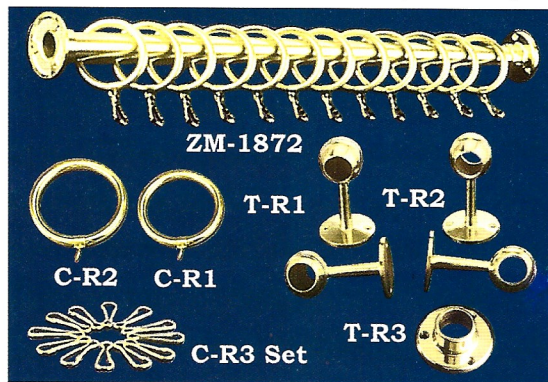
We will be happy to help you with substitutions for your application.

T-R3 Wall mounting flange for 1" dia tube or bar with OD: 2 3/8"

C-R1 Solid Brass Curtain ring; Outside Dia. 2 5/8" Inside Dia 2"

C-R2 Solid Brass Curtain ring; Outside Dia. 3" Inside Dia. 2 1/2"

C-R3 Set of a dozen brass hooks for curtains



ZM-1872

T-R1

T-R2

C-R2

C-R1

C-R3 Set

T-R3



M-36L

M-37R

M-36L & M-37R "How RARE!!" That is what we said when we found the antique samples of these unique curtain tie backs with the "hand holding leaves and grapes" victorian motif. So we carefully reproduced them. 3 3/4" tall x 6 1/4" wide. Depth: 4 1/4".



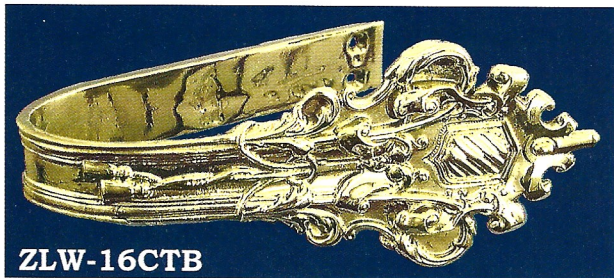
ZLW-14CTB

ZLW-14CTB Lost wax cast curtain tie back using a solid brass strap. This head is riveted to a nice smooth strap which then mounts to the wall with wood screws. It is used for both right and left applications. Head size is: 5 1/2" long and 4" at the widest part. Very distinctive look against a rich curtain materials but small enough to look good w/-lightweight materials as well



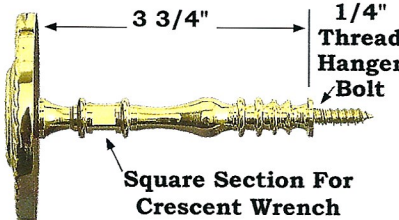
ZLW-18CTB

ZLW-18CTB The nicest curtain tie back that we have made to date. Our boss put the first batch into his house !! Very heavy french empire style. It is completely lost wax cast, in two parts, and then assembled. Use for both left & right hand applications. Projects: 7"; 6 1/4" wide. Base: 3 3/4" x 2" Very strong wood screw mount.



ZLW-16CTB

ZLW-16CTB Lost Wax Curtain Tie Back which has been cast and then shaped to to make a one piece curtain tie back. Size: 3 1/2" Wide x 8" at the curve. NICE!!



Square Section For Crescent Wrench

1/4" Thread Hanger Bolt

ZLW-7RCT, ZLW-8FCT, ZLW-9WCT Lost wax cast, round head, curtain tie backs Approx 3" round head with improved stem design. The shaft is very sturdy and has a square section, for tools, when mounting. A couple of these are similar to ones on the market that are imitated in pot metal, but nothing is as nice, or as rich looking, as our lost wax cast solid brass. Very Pretty.



L-33L

L-33R

L-33 Series Cast Brass curtain tie backs. Cast "head" of each is 6 1/8" Long. Each has a solid brass loop attached. Curtain gap is 1 3/4" to 2 1/4". One **L-33L** plus one **L-33R** for a complete set.



ZLW-7RCT

ZLW-8FCT

ZLW-9WCT