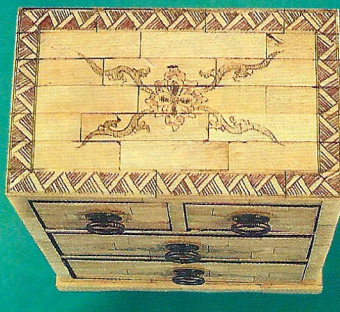


ZB-135



ZB-134



Morris Chair Hardware



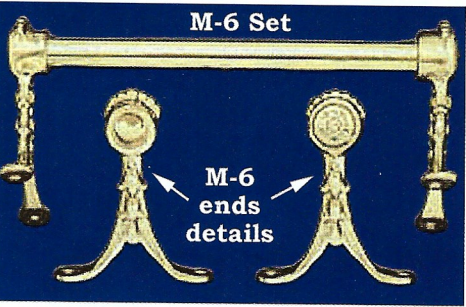
Solid Brass Morris Chair "Back Support" Hardware
L-44E Is a pair of cast brass brackets with angles to accommodate most Morris chair curves. 7 3/4" long x 7/8" wide Heavy castings
L-44R Solid brass 3/8" dia rod; 28 1/4" long complete with solid brass beehive finials. Finials are applied w/-set screws so you can shorten the rod. Can also be a towel rod mounted to a curved surface

Fine miniature, table top, small jewelry, etc., drawers
ZB-83 To say that this piece stopped us cold in our tracks would be an understatement. Visiting a small family manufacturer, we found that they have been making this impressive serpentine table top chest for over a decade. Their output is spoken for. A combination of wood & painted lacquer, like the early European & American furniture. Meas: 22" tall; 14 1/4" wide max; 6" deep. Drawers are 3 1/2" deep & range from 5 1/2" wide to 10 3/8"

ZB-134 & ZB-135 Sometimes describing pieces without getting excited isn't easy. Especially when considering two pieces like these bleached and stained "bone" miniature chests. So reminiscent of what the Victorian "POW's" did during the Napolianic wars. These chests are wood to which bleached bone has been worked; sized; & applied one piece at a time. Cute for a ladies desk or make up table. Great ambience on a gent's dresser for cufflinks etc. Very pleasant ambience versus crass plastic stuff.
ZB-134 Combination of bleached bone & stained black, bone. 9" tall; 8 1/4" wide; 4 1/2" deep. Old fashion ring handles complete.
ZB-135 A real cutie with it's bleached bone and scrimshaw work on the top and around all the handles. Smaller at: 8 3/4" tall 7" wide & 4" deep. Everything about it just says "history".
Both chests--Bone imperfections happen-in grain; color & condition



ZB-83



M-6 Set

M-6 ends details

M-6 Washstand Towel rail Victorian and Edwardian washstands, that used to hold a pitcher and bowl set, most always had a nice small towel bar mounted on the end. Our re-creation can either go on a washstand, or anyplace that requires a nice small towel bar. Meas: 16 1/4" wide; leaves 2 3/4" space between the wall & brass 1/2" tube.

ZLW-37HMB and ZLW-40MB

The reason that these are listed together is that they are made by the same process; have the same antiqued hi/lo finish and both weigh a ton !! Well, okay...not actually a ton...but they are heavy. Solid Cast Brass with our own copyrighted design, we think that these two mailboxes are great.

ZLW-37HMB has a nice big opening lid and measures: 13 1/2" tall (without rack); 18" wide; while the newspaper racks adds 5 1/4" to the bottom. Inside mail area: 4" deep by 13 1/2" wide. This well cast mailbox weighs in at 22lbs
ZLW-40MB has a lovely cupid front with window to see mail. It measures: 19" tall (without rack); 10 1/4" wide; while the newspaper racks adds 5 1/4" to the bottom. Inside mail area: 2 1/2" deep x 12 1/4" tall. Weighs in at over 15 lbs

M-47MB and M-60MB If you want a nice standard size mailbox, One of these two is probably for you. Why two stock numbers....?? Because

while they look identical to the picture, one is **DEEPER** than the other to accommodate more mail.

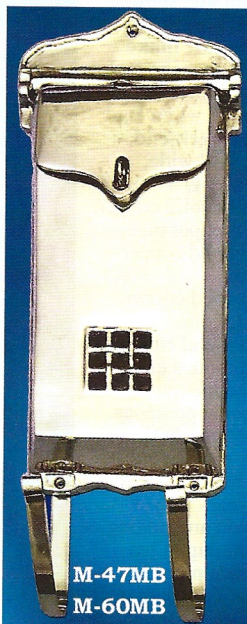
M-47MB is the standard mailbox with a depth of 1 3/4" (pictured).
M-60MB is our modified mailbox which has been deepened to 4". While the 4" model is much harder to cast, the result is that it holds a lot more mail.

Dimensions below are the same for both 47MB and 60MB mailboxes:
Box only part meas: 11 1/2" tall by 5 1/2" wide. Overall with newspaper rack 14 3/4" by 6 3/4" wide. It even has a window so you can see mail.
Both have protruding hasps, thru the lid, for adding a padlock.

ZLW-59MB An unusually big solid brass mailbox which must be the largest vertical mailbox on the market. Note these box only sizes: 14" tall, 9" wide and **wow....**4 1/2" deep so all that wonderful junk mail will fit perfectly. It even has a magazine rack that will easily hold a 4" roll of flyers. Comes complete with brass stand-offs so water running down a wall will not go into the mailbox and wet your desired bills. Water falling on top of the mail box will not seep inside due to a 1/2" over-hang, of the lid, on all four sides. Constructed from 0.8mm solid brass metal. So, while big, and strong, it is also light weight and easy to install.



© AABC 1999
ZLW-40MB



M-47MB
M-60MB



© AABC 1999
ZLW-37HMB



ZLW-59MB