



139-DEP

137-MES



ZLW-254D ZLW-255N

ZLW-254D & ZLW-255N
Perhaps the finest pushplates ever designed or made. This fantastic pair came from a 30's Chicago "Fortune 500" company being remodeled. The theme is mythical day and night. Both plates show a goddess with cupid but they are so totally different.

While the goddess of day has feathered wings, the goddess of night has bat wings. While day spreads sunrays; night spreads stars. Day carries roses; Night poppy buds. Wings of the cupids mimic the goddesses. Other motifs: Day: flowers; torches morning glory. Night: Owl; bat; hemlock. Wow !!! Lost Wax cast brass. Both plates: 3 1/2" wide by 11 1/2". Night plate 1/8" shorter

ZLW-1776 Okay-okay, maybe we over-did it with the stock number & "purple majesty" picture background but these are simply great, (rare), American Eagle motif door knobs. We have finished them the way we found them with a dark center and satin brush finished body. 2 5/8" dia by 2 3/8". Fits all of our backplates but we suggest a simple one. Lost Wax cast solid brass.



876-HCH-RG

876-HCH-RG..Cornelius 6 light
Matching the 4 light on page two of this supplement, the 6 arm is really quite impressive.

Same dimensions as the 4 light, just more of it. Lovely.



014CT for 7" shade

Art Deco fixtures
To match 5 light on page 66 of our winter 99 catalog.
139-DEP Two light pendant. Lost wax cast brass with hi/lo antique finish. 27" tall; short as 18 1/2" by removing chain. 18 1/2" spread. Priced complete with shades.
137-MES Single light sconce. Comes complete with shade as shown. Has off/on switch. 10"; 8 1/2" w; projects: 8 1/2" Both fixtures rated 100 watts per socket. Originally made by Lincoln C. 1925



ZLW-1776

Rococo- 2 5/8" fitter gasolier shades...Circa 1840 to 1880

Here is our latest offering of rare wheel cut glass ball shades for gasoliers We now offer three more patterns and five new sizes of 8" ball shades. All shades are hand cut in our cutting department. Hand cutting is not perfect but, it gives very fine gasoliers the proper ambience compare to machine cut examples. Our new designs are genuine recreations of antique patterns and can be seen in the Mitchell, Vance Catalog of 1876 (Dover reprint).

014CT and 015CT crown tops for rococo gasolier shades

Mentioning the Mitchell Vance catalog above, it will be noted that we have also recreated the crown tops that some shades of this early era boasted which gave them just a bit more impact. Our crowns are Lost Wax cast. **014CT** is for 7" ball shades (ID 5 5/8") while the **015CT** is for the 8" ball shades (ID 5 7/8"). Polished finish

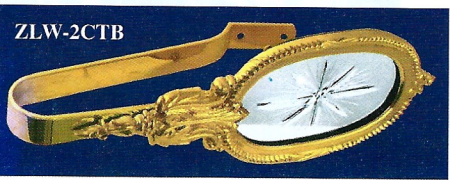


046G 1840's Shade

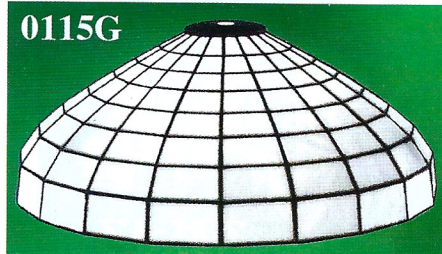


061G 7" 0182G 8" 0164G 7" 0186G 8" 086G 7" 0183G 8" 0163G 7" 0185G 8" 0162G 7" 0184G 8"

Oval, Mirror Head, Curtain tie back
The mirror head actually has a wheel cut design in the center- sorry for the shadow on the mirror--hard to take pictures of mirrors.
ZLW-2CTB Nice Lost Wax cast piece supplied in bright polished finish. The Oval head is 6" long by 3 1/2" wide. Overall: 10 3/4" long which is the head plus strap. Lots of space for a curtain. Fully reversible, order two for a set as they are sold each.



ZLW-2CTB



0115G

0115G Have those old lamp bases lying around that you'd just "luv" to turn into a nice lamp. Here is a possible solution. A hand made, off white, leaded glass, 16" dia shade (7" tall) with a top hole of 3/8". If you need a smaller hole, hardware stores have a grommet reducer. Add your finial to the top= nice lamp. Can also be used on bridge lamps or hanging lamps. Quality glass-quality construction

0206G Incandescent Supply and others marketed an up-scale Art Deco shade, with designs, for the home. This is one of these high end shades. Every design is separate and applied by hand. A very laborious procedure but what a nice result. Height: 16 1/2" & 9" across the flats. It has a 6" fitter and could be used with our 6" fitter lights on page 71 of our catalog.
18-CCL-6F or 20-EHL-6F
22-DHL-6F or 24-EPL-6F
Also works great with an antique fitter that holds a 6" fitter shade



0206G