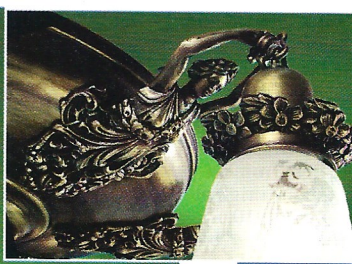




503  
-MES-



335  
-EPC-  
AC



481  
-OGE-  
CH

**Oxley Reproduction Gas Chandeliers**

Three versions of this lovely antique Oxley chandelier from 1880:

- a six light: **326-HGS-CH**  
(6 light not pictured)
- an eight light: **328-OGS-CH**
- and a ten light: **330-10L-CH**

The only difference between them is the count of the arms, and, naturally their prices. They are all 46" tall; but can be shortened to 22" high. Spread of 39 1/2". This is a very nice gentle Americana light with the simple grace of the period Cica 1880. Fitters require a 4" gas type shade. Rated 100 watts per socket. Shades are sold separately.

**335-EPC-AC** Nice. For every 2,000 plain pan fixtures that were made in 1900, only one of these was made. The antique examples of these command very substantial prices because they are so scarce. Extra large lady arm pan light with a spread of 30" with shades. Very nicely done with lost wax castings thru out, for excellent detail. Overall height: 39" but can be shortened to 26" by removing all but one link of chain. We decided to supply this light, *antiqued as standard*, since the

contrasts are so wonderful on the castings.

UL approved.  
Rated 100 watts per socket.  
Shades sold separately.

**481-OGE-CH** Lovely 8 arm (4 gas, 4 electric) chandelier. The arms coming from the top of the light, have armbacks applied to each curve. This, difficult to make light, dates from an 1890 original. Height: 46", shortest possible 28" with a spread of 28" A very unusual and attractive fixture illustrating the grace and inventiveness of the period

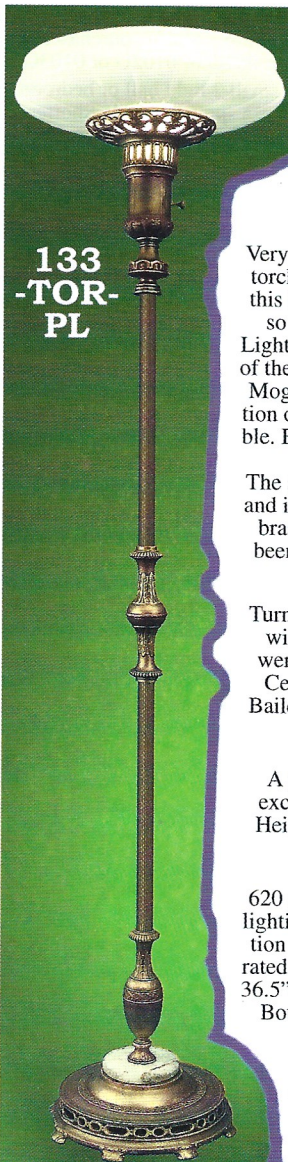
**503-MES** Simple plain sconce that matches just about everything. Can be modern, can be 1900's...even put with a nice curley Oxley Chandelier (opposite) and it still blends in. The original *was* 1900's but the design is almost timeless. 13 1/2" in height (with shade); projects from the wall: 8" and has a 6" canopy. You can dress it up, or down, with the shade you choose. *Both fixtures are UL rated for 100 watts. Shades sold separately*



328  
-OGS-  
CH



330-10L-CH 46" tall  
shortest 22"  
39 1/2" spread



133  
-TOR-  
PL

**133-TOR-PL**

Very nice recreation of a 1920's torchere light. The castings for this light are all Lost Wax cast, so the detail is outstanding. Light measures 71" tall to the top of the fitter and contains a 3-way Mogul socket for a great selection of wattages-300watts possible. Base dia: 13" and has a nice piece of onyx decor. The shade adds 3" to the height and is included in the price. All brass construction which has been antiqued to a hi/lo finish and lacquered.

Turn of the century chandeliers with "Question Mark" arms were made by companies like Central Electric of Chicago; Bailey & Reynolds, and others, Circa 1900

**619-QAE-CH**

A pair of 619 lights, make excellent pool table lighting. Height: 35.5"--Shortest: 16", Spread: 34",

**620-HAE-CH**

620 produces good downward lighting over a table or preparation surface with it's 6 sockets rated at 100 watts each. Height: 36.5"--Shortest: 16", Spread: 33" Both lights produce a well lit surface for close work.

And **1014/18-EXT** extension kit can add up to 65" to the length.

. Shades sold separately.



619-QAE-CH



620-HAE-CH