



810-PRC-IR
(iron)

811-PRC-BR
(brass)

All Porch Lights are UL approved for **DAMP Locations**

761-PRC-BR
Solid Brass Porch light from an antique original C: 1910.

Backplate: 4" x 8 7/16", Ht: 14 1/2"
Projects: 10"
Fitter: 4",
Weights: 7 lbs.
Rated for 100 watts

763-PRC-EK
C 1876 re-creation, similar to *Mitchell, Vance & Co*

763-PRC-EK



Needs a strong mounting as it's weight is: 12.5 lbs. It projects 16". Height is 18" with shade. Fitter: 4" The shaped backplate is 6" x 13" at the widest point. Accepts a 100 watt bulb. Shade priced separately.

764-CBL-PR Matching cast hanging helmet porch light to 765 below. Length is 39" but can be shortened to 26". (picture is shortened)

765-PRC-BR "Knights Helmet" porch light. Superior Lost Wax cast quality. Ht: 15"; Wide: 7 3/4"; Projects: 11.5" Backplate: 4.5" x 6.25"

808-PRC-BR A Lovely lost wax cast, flush to wall fitting, Arts and Crafts style, porch light. Butterscotch art glass installed on 3 sides and bottom. 12 3/4" tall by 7 1/2" wide & projects only 3 3/4". Light is in two parts with the frame being mounted on the wall and the cover is removable for installation and bulb changing with three decorative screws. Rated 100 watts-damp location.

811-PRC-BR (Brass) and 810-PRC-IR (cast iron)

Large, impressive porch lights with a 6" fitter for larger shades. Shown with our 050G. Requires a strong mounting due to it's weight and size.

With shade, the weight is: 19 lbs and the height is: 29". Width: 12". Supplied with a heavy 3/8" IPS hickey for electrical box mounting but it can be also mounted to 1/2" NPS pipe. The wall canopy is 5 1/4" square. Accepts up to a 300 watt bulb. Shades purchased separately and we suggest: 050G or 051G or 0102G or 0103G

ZA-422 Charming late victorian small 2 light hall or bedroom light. OA ht: 33" (with shades) and has a spread of 17". Shortest 23" (by removing chain links). Shades sold separately. Each socket is rated for 100 watts. UL approved for Dry location (indoors)

764-CBL-PR



808-PRC-BR



ZA-433 & ZA-444 Both of these solid brass late victorian hanging lamps have identical dimensions except that **ZA-433** has three lamp arms while **ZA-444** has four lamp arms. All lamp arms are rated for 100 watts each. OA Ht: 36" with shades. These lights can be shortened to 25" by removing links from the chain. Spread: ZA-444 is 21" while ZA-433 is 19". Fitters 2 1/4";

Shades priced separately
UL approved for Dry location (indoors)

ZA-650 Nice Victorian style wall sconce. Backplate 4 4/8" x 8 3/4" Projects 9". OA length of the sconce on the wall is 13 1/2" with shade. UL approved for Dry location (indoors)

ZA-650



761-PRC-BR



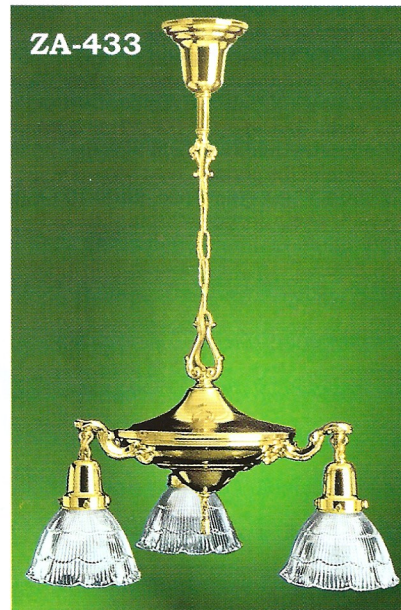
765-PRC-BR



ZA-444



ZA-433



ZA-422

