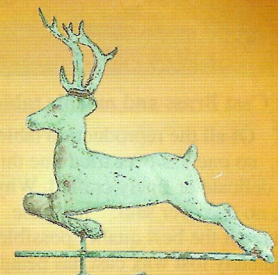


Horse
ZH-101
52" tall
x
30" wide



Whale
ZH-103
48" tall
x
32" wide



Deer
ZH-100
64" tall
x
27" wide



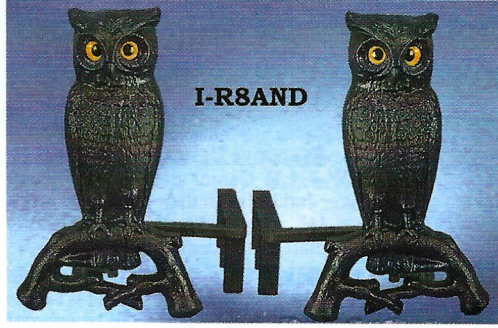
ZH-116



ZH-117

Figures are hand hammered & soldered copper, 3 dimensional figures. They are supported on horizontal copper pipes. The stem is steel while the decorative balls are also copper. The four directional cross bar is cast iron. Entire piece, except center rod is finished in a green antique verdigris. Sizes are given as overall height when in our mounting holder (ZH-116) and then maximum width. Very nice quality at a reasonable price. Weathervanes are sold without bases. Choose either **ZH-116** for roof top mounting where the adjustable base fits all inclines of roofs, or **ZH-117** which is a base for a decoration by the fireplace, in the garden, by the pool...where ever you want to set on a nice flat surface.

I-R8AND Pair of Americana cast iron "Owl" andirons, made in the finest tradition. Our set has the glass eyes that glow in the fire-light just like the originals. The figural owl sits upon a tree branch which forms the base. Antique value books puts the price of the original antique ones at over \$3,000. We found a set a bit cheaper and our re-creations are available for a tiny fraction of that. The steel legs that go into the fireplace are made of over-sized



I-R8AND

steel for durability. Ht: 14 1/2" by 9" wide. The steel extends from the back of the andirons 15" and has three support legs, not just one or two. Extra quality step that even the antiques did not have. Use as shown for logs or reverse (left to right) to put an iron grate between the legs.

I-R9 Pair of Americana cast iron figural "Indian" andirons, made in the finest tradition. The solid steel legs that go into the fireplace are made of over-sized steel for durability. Created from an antique American set.



I-R9

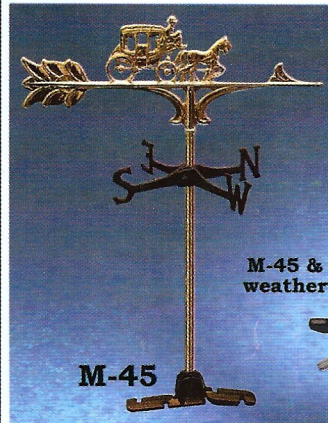
Ht: 21" by 7" wide. The steel extends from the back of the andirons 15" and has three support legs, not just one or two. Extra quality step that even the antiques did not have. Use as shown for logs or reverse (left to right) to put an iron grate between the legs.



ZLW-3AND

ZLW-3AND Pair of Neo-Rococo style andirons made in the finest tradition. First the andirons are Lost Wax cast in solid brass. Second, the solid steel legs that go into the fireplace are made of over-sized steel for durability. Copied from an antique American set. Ht: 16 1/2" by 8 1/2" wide. The steel extends from the back of the andirons 15" and has three support legs, not just one or two. Extra quality step that even the antiques did not have. Use as shown for logs or reverse (left to right) to put an iron grate between the legs.

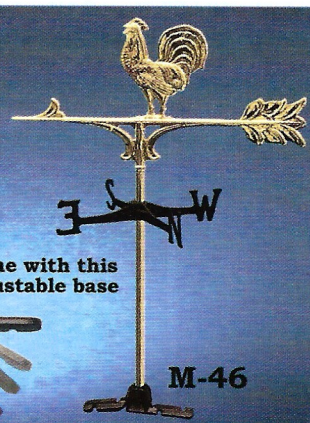
M-45 Carriage Weathervane & **M-46** Rooster Weathervane While the large copper weathervanes on this page are really meant for the top of a 2 story house, these smaller guys are just right for garages, gazebos or pool houses; any smaller structure really. Quality made...not like the zinc ones on the market, that are just too small and very cheaply made. Both **M-45** and **M-46** come complete with an iron adjustable base to fit all possible roof inclines. The central pipe is a heavy duty solid brass tube, while the directions are finely cast iron. The weathervane top is solid cast brass.....a really nice casting job; and does work well in the wind because of a secondary spindle we made for this purpose. You can just see the hub of it below the vane itself. Sizes: Width of arrow: 21", width of



M-45

directions: 13".
Heights:
M-45 is 25" tall
while
M-46 is 28" tall.
Figure vanes are
cast solid brass.
Directionals are
adjustable.

M-45 & M-46
weathervanes



M-46

come with this
adjustable base



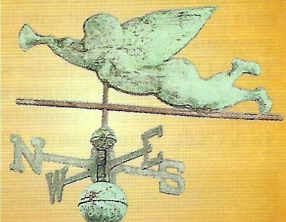
Rooster
ZH-106
56" tall
x
26" wide



Goose
ZH-105
52" tall
x
27" wide



Eagle
ZH-104
51" tall
x
26" wide



Cupid
ZH-102
48" tall
x
25" wide