



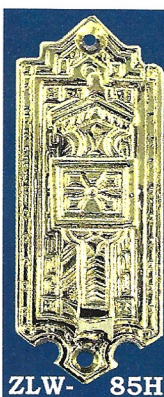
ZLW-42H



ZLW-124RH



ZLW-99H



ZLW-85H



ZLW-100H



ZLW-125GH



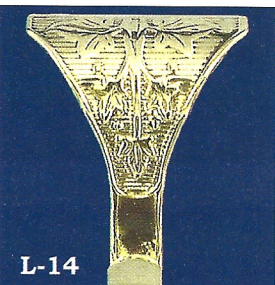
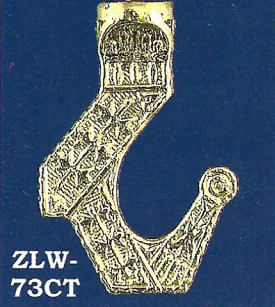
ZLW-45H



ZLW-71H



ZLW-73CT



L-14

Nice hooks
Abbreviations:
Bp = backplate
(P) = protrudes

ZLW-42H Lost Wax cast sm robe hook. Bp: 2 3/8" x 1"; Protrudes: 2 3/8"

ZLW-45H Lost Wax cast small robe hook. Backplate: 1 3/8" x 1" (P)= 1 3/8" Ht 2"

ZLW-71H Here's a nice idea. A below the shelf hook. Nice lost wax casting with unique pattern speaks of it's age. 3 1/4" w by 2 5/8" high.

ZLW-73CT Chandelier Hook-2pcs. Lost wax cast and lovely. Windsor pattern by Branford C 1880. Bp: 2 1/8" across the flats and hook is 2 7/8" long by

2" wide. Use for plants, birdcages, anything that needs hung in the kitchen or veranda.

ZLW-85H Lost Wax cast robe hook. Bp: 1 3/8" x 3 1/2" Projects; 1/2"

ZLW-99H LW cast sm robe hook Backplate: 1 1/2" x 3 1/2" Projects: 1 3/8"

ZLW-100H Lost Wax cast sm robe hook. Bp: 2" x 4" Projects: 7/8"

ZLW-124RH Lost wax cast robe hook with porcelain button. BP: 1 1/2" x 3 1/2"; Projects: 1 7/8"

ZLW-125GH Lost wax cast robe hook with porcelain button. BP: 1 3/8" x 3 1/2"; (P)= 1 7/8"



ZH-111



ZH-109



ZH-110

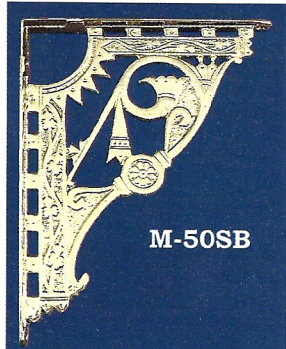
ZH-109 Single hook with porcelain ball ends. Base: 1 7/16" w x 2 3/4" t; OA: 6 3/8"

ZH-110 Triple hook with porcelain ball ends. Base is 2" wide x 2 13/16" tall. OA ht: 6 5/8"; OA w: 5 3/8"

OA ht: 7"; OA width: 6 1/2"



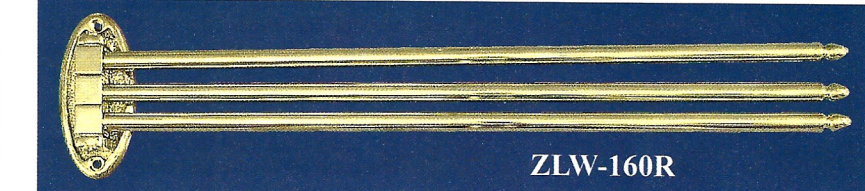
M-76 SB



M-50SB



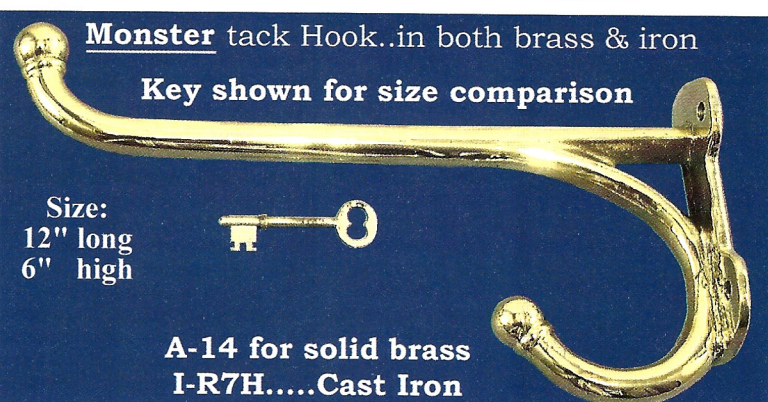
M-79LR



ZLW-160R

M-78SR & M-79LR Re-creations of a victorian small solid brass and oak neat hanging light coat or hat rack. The hooks swivel 180° to lie flat against the wall or at any angle you like. As you can see on the larger one's picture, we move half of the hooks towards the right, and half of the hooks towards the left. Overall they are 4 3/4" tall which includes the eyes for hanging. **M-78SR** with four hooks is 20" wide while the larger **M-79LR** with six hooks is 32 1/2" wide. A very nice touch to a hallway or kitchen.

ZLW-160R Victorian reproduction small towel or wash cloth holder. Base is LW cast brass and other parts are lathe turned or cut from solid brass. A very fine quality item. Base: 1 1/2" wide by 3 1/2" tall. Each arm is 15 1/2" from center.



Monster tack Hook..in both brass & iron
Key shown for size comparison

Size:
12" long
6" high

A-14 for solid brass
I-R7H....Cast Iron

Victorian Picture Molding Hook
1 3/4" tall x 1 1/2" wide
L-14 Remember when pictures were hung from sculptured moldings that ran along the walls of Victorian homes? This is the type hook that they used. Lovely design

M-50SB Aesthetic bracket Really a nice period piece. Arms are 7" by 8 3/4", you can mount this bracket either way. If you want a matching larger piece, see our giant shelf bracket: **M-56SBB** on another page in this catalog.

M-76SB Interesting "theme" solid brass shelf bracket. Meas: 10" x 13 1/2". Note the theme is a "Bird of paradise" the 10" arm must be outward to make the bird sit upright in the foliage.