



L-40



L-11



ZLW-159WL



ZLW-149SL

**ZLW-149SL** Nice Early Victorian swing sash lock. LW cast brass & darkened to antique high/lo finish. Lock part: 2 5/8" w by 3/4" deep; Catch part: 1 3/4" w by 1" d

**ZLW-153SL** Wrought and cast brass combination makes this an unusual window latch.

Topped off with a nice porcelain knob. **Bases of:** lock part: 2 7/5" wide by 3/4" deep;

**Catch part:** 2 1/4" w by 1" d *Original: Sargent Co. C.1890*

**ZLW-159WL** Very unusual reproduction of a very unusual window latch. It's locking arm raises up and over the catch in an 180° arc. The knob is spring loaded and locks into the catch piece. C. 1870 aesthetic knob.

Sizes: **Base Lock Plate** 3/4" narrow by 2 1/2" wide **Base Catch Plate** 1 1/4" at the center bow by 2 1/2" wide



I-R1L

I-R2R

**I-R1L & I-R2R** Cast iron shutter hold backs. Attractive design from Chicago samples Distance between the wall & the shutter catch is 2 1/8". Sq mounting base: 2 1/4" Good quality crisp castings

"Eastlake Victorian" window latch with fine detail. Mechanism actually resists thieves by drawing both sash halves together during it's locking cycle. Meas: Latch Base: 2 1/16" w x 1 1/4"; Catch Base: 2 1/16" w x 5/8"

**L-40** Simple large window catch Large sizes: Latch Base: 2 3/4" x 1" w/-reach of cam to 3/8" max. Catch: 2 3/4" x 1/2" & 1 1/8" tall (is also max height of latch set). Perfect for covering marks of old missing smaller hardware.

**ZLW-10WP** Fine Lost Wax cast plain design Window Pulley. Face Plate: 1 1/8" x 5" Depth: 2"

**ZLW-65WP** Quality Lost Wax cast brass "Windsor Pattern" window rope pulley by Reading Hardware Co., Circa 1885. Face Plate: 1 1/8" x 5" Depth: 2"

**ZLW-157WL** Lovely Victorian Lost Wax Cast revolving sash lift. How pretty! Lock part: 2 3/4" w by 1 1/4"; Catch part: 2 1/2" w by 3/4" The last 1/4 turn of the latch acts as a lift for the upper sash if needed.



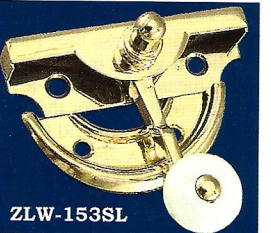
ZLW-133SL

**UNIQUE Lost Wax Cast locking finger sash lifts.**

**ZLW-133SL** Not as sneaky as our next sash lift but a good idea. Sash lift goes to the bottom of the sash where the catch is mounted on the surface of the sill. Extra locking protection not easily seen from the outside of the window. Also can be used on small sliding doors. 1 7/8" w x 1 1/2" tall. Catch footprint is: 1 5/8" w x 3/4"

**ZLW-134LL** Very Clever!! "Hidden lock" sash lift.

Finger lift part is mortised into the bottom of the sash. (above white line in the picture) Catch plate is mortised



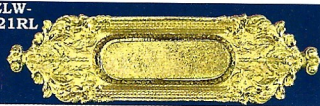
ZLW-153SL



ZLW-166SL



ZLW-158SL



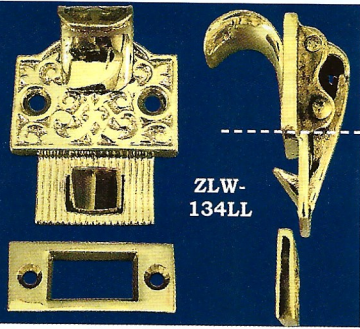
ZLW-121RL



ZLW-65WP ZLW-10WP



ZLW-157WL



ZLW-134LL

into the sill. When the sash is closed, it appears that this is only a finger lift...but really locks the sash. If two are applied, must lift both to unlock the sash. Unique & rare Victorian idea. Above white line: 1 5/8" w x 1 1/4". Below white line: 1 1/8" w x 5/8" t. Catch: 1 1/2" w x 5/8" t

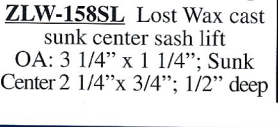
**B-51SL** Wrought oval sash lift to match L-24 series. 3 3/4" w x 1 1/2" t. Sunk center: 2 1/4" w x 1" t; 3/8" deep

**L-17** Wrought sash sunk center sash lift. 4 1/4" x 1 1/2" Sunk center: 1 5/8" x 3/4"; 5/16" deep from the edge

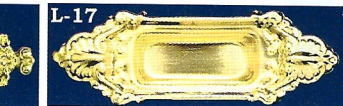
**ZLW-121RL** Fine Lost Wax rococo style sunk center sash lift. Just gorgeous! OA: 5 3/8" x 1 1/2"; Sunk Center 2 1/2" x 7/8"; 1/2" deep

**ZLW-122SL** LWax cast sash lift: 3" x 1 1/4" OD; Center: 1 7/8" wide x 3/4" tl x 3/8" dp

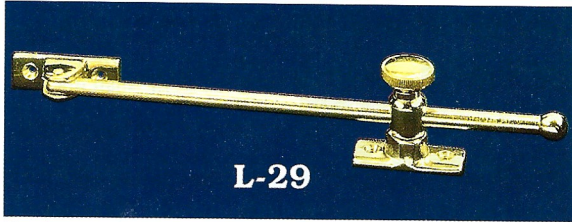
**ZLW-158SL** Lost Wax cast sunk center sash lift OA: 3 1/4" x 1 1/4"; Sunk Center 2 1/4" x 3/4"; 1/2" deep



ZLW-167B



L-17



L-29

**L-29** Extremely useful, cast and extruded, solid brass "stay" Mainly used as a window or sash stay. When installed on a window it not only acts as a window setting device but also adds some extra protection from break-ins since the screw can be tightened on the rod, even in the closed position. This versatile device can also be used on drafting tables or as a lid stay for boxes, or as a door limit device for Antique Wardrobes. The uses are endless. It is solid brass and made with a knurled nut that will tighten on the sliding rod to hold a window or door etc in a fixed position.

Arm meas 10" long: both bases meas: 3/4" W x 2 1/4" long

**M-35TW** "Quality" transom window operator. The parts are either extruded brass or "lost wax cast" brass. The window arm, (the part that mounts actually to the window), has 5 positions of offset adjustment & can be adjusted from 2 1/2" to 4 1/4" away from the operator shaft. Overall length is 51". Main shaft is 3/8" dia., while the lock is squeeze tab with heavy locking spring. All part are brass & very attractive.



ZLW-94SL

**ZLW-94SL** Lost Wax cast, flush fitting, interior shutter latch. Bases are: 7/8" x 1 1/2"; c/c 1 1/2"; OA: 2.5 x 1.5 Circa 1880--None better

**Cast window sash lifts**

**L-31** Simple Plain Design; 1 7/8" w x 1 5/8" h

**L-32** "Columbian" pattern by Reading Hardware Co. C. 1890. 1 7/8" w x 1 5/8" h

**ZLW-123SL** Victorian finger sash lift 1 7/8" w; 1 1/2" tall

**ZLW-136SL** Sargent belt motif sash lift, Circa 1890. Note matching bin pull. 1 3/4" w x 1 1/4" tall.

**ZLW-152SL** Lrg L. Wax cast sash lift. 2" w x 1 3/8" tall

**ZLW-154SL** Vic owl eye sash lift. Size: 1 3/4" w x 1 5/8" t

**ZLW-166SL** Grace and charm describe this fine Lost Wax cast sunk center sash lift. Very traditional is design, excellence in execution. OA: 4 1/2" x 1 3/4"; Sunk Center 2 1/2" x 7/8"; 1/2" deep

**ZLW-167B** Fine Sargent, C. 1890, belt pattern bin pull, LW cast, 4 1/2" wide x 1 1/2" tall Matches: ZLW-136S sash lift.

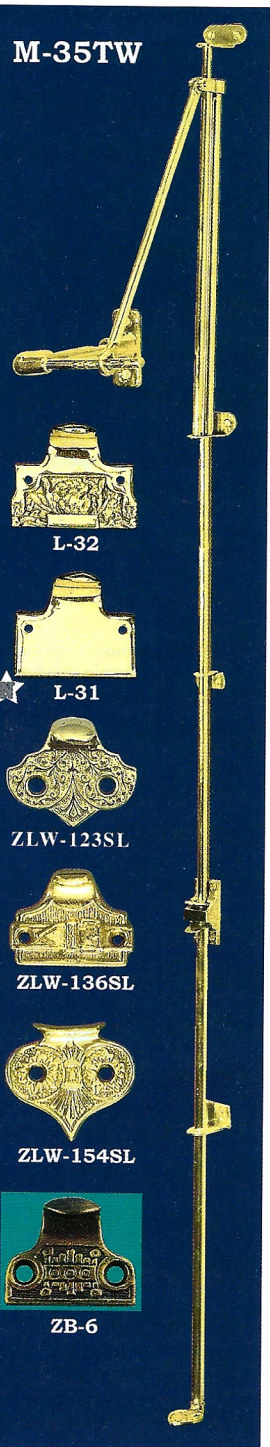
**ZB-6** Reading Hardware Co. produced a popular pattern, late Victoriana, called "Windsor". This LW cast finger sash lift is one, of many items to come. A small cute lift: 1 3/8" w by 1 1/8" tall Hi/Lo antique finish-Lacq.



B-51SL



ZLW-152SL



M-35TW

L-32

L-31

ZLW-123SL

ZLW-136SL

ZLW-154SL

ZB-6