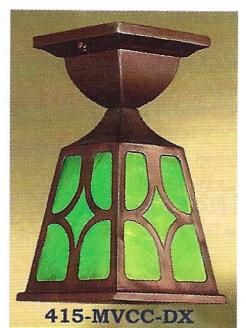


Please see the information about combination gas & electric lighting on the previous page

All of these chandeliers have the same measurements: 44" tall (can be shortened to as much as 29"), The spread of the arms with shades is 27". All the "up" gas fitters are 4". Where the chandelier takes a "down" electric glass shade, the fitter is 2 1/4" for the electric fitter. The lights with brass & art glass shades are priced complete with those brass shades. A choice

of three colors of art glass is available for our metal shades. We recommend 60-75 watts for these art glass shades (and 093G). All other glass shades can accept 100 watt bulbs.



415-MVCC-DX



Revival of triple gas & electric sconces

531-TCX-GE or 532-TJX-GE
 Height: 15", Width: 15", Projects: 9" Fitter size: 4"
 Down art glass shades recommend 60 watts while up glass shades take 100 watts each.
 Total 220 watts of light.

535-TGE-ES
 Width: 17", Projection: 9" Tall: 16", Fits: 2.25" & 4"
 Each socket rated for 100 watts so a total of 300 watts of light possible with this triple sconce.

All metal and art glass shades can be supplied in a choice of three art glass colors. The pictures of these different types of art glass are found on the shade page. The colors are:

- Butterscotch (very traditional)
- Marble Green (lovely in an wood rich setting)
- Marble White (results in a strong light which is desired for a porch or hallways)

415-MVCC-DX Very close ceiling "Mission" light. Fixture only 5" tall (metal parts) with a 4 1/2" square base. Darkened high to finish.

417-MCCL-DX Close ceiling "Mission" light with diamond connectors & square chain link. Fixture 10" tall (metal parts) with a 4 1/2" square base. Darkened--2 1/4" fitter size.

Gas & Electric pendants

583-DJX-GE & 584-DCX-GE
 Two arm revival of gas & electric pendant. Priced complete with art glass metal shades; glass shades sold separately. Down art glass shades recommend 60 watts while up glass shades take 100 watts each. Total 320 watts of light.

586-SGE-EP
 Two arm revival of gas & electric pendant. Glass shades sold separately. Each socket rated for 100 watts so a total of 400 watts possible here.

Gas & Electric matching sconces
542-MGE-ES Width: 7", Projects: 9"; 16" tall, Fitters: 2.25" & 4"
 Each socket rated for 100 watts so a total of 200 watts possible here.

545-SJX-GE & 546-SCX-GE
 7" wide, Projects: 9" 15" tall, Up Fitter: 4". Down art glass shades recommend 60 watts while up glass shades take 100 watts each. Total 160 watts of light.

597-SGE-CH

Four arm revival of a gas & electric chandelier. Glass shades sold separately. Glass shades take 100 watts each. 800 light watts

599-QCX-GE & 600-QJX-GE

Four arm revival of a gas & electric chandelier. Priced complete with art glass metal shades; glass shades sold separately. Down art glass shades recommend 60 watts while up glass shades take 100 watts each. Total 640 watts of light which should like any average size living room.

