



B-16 Stamped brass bin pull 1 5/8" x 3 1/2". 2 7/8" c/c.



F-2 Heavy quality (2mm thick) wrought cabinet handle. 1 1/2" x 3 3/4". Screw centers at 3 1/4".



B-13 Cast Victorian style bin pull. 1 5/8" x 4". 3 3/16" c/c



B-26 Cast Victorian style bin pull Size: 2" x 4". 3 3/16" c/c



B-27 Cast Victorian style bin pull. 1 1/4" x 3 1/2". Screw centers at 3"



B-32 Sand Cast Birby bin pull originally made by Norwalk. 3 3/4"W x 1 1/4" tall. 3 1/4 c/c

ZLW-119 Lost Wax cast for the absolute best quality detail. No finer casting than Lost Wax.



B-31 or **ZLW-127L** or **I-R5B**



B-31 Sand Cast. Here's an old Victorian charmer...the brass doggy bin pull.

I-R5B for Sand Cast iron. We also make it in Lost Wax Cast Brass for maximum detail and in two sizes:

ZLW-127L 1 1/2"H x 4"W
Screws centers: 3 1/2"/c/c

ZLW-128S 1 1/2"H x 3.5"W; Screws at: 3"/c/c

Only showing the Lost Wax bin pulls. Sand casting does give less fine detail but a lower price does result.



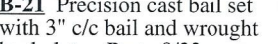
I-R4B The traditional fruit bin pull in Iron. 2"H x 4"W
Screws: 3" c/c. Painted black



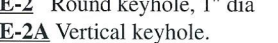
B-21 Precision cast bail set with 3" c/c bail and wrought backplates. Posts 8/32 screws.



E-2 Round keyhole, 1" dia



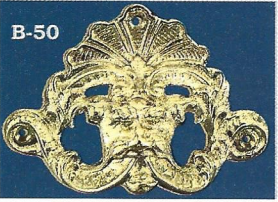
E-2A Vertical keyhole.



E-2B horizontal keyhole BOTH 1 1/2" x 1 1/8"

E-2A and E-2B are the same size as B-21 backplates.

Note this series above is available Nickel Plated



B-50 Cast Victorian style giant bin pull or chest lifting handle Size: 4"H x 5 3/4"W. Screws at 4 3/4" c/c. Lovely



B-49 Cast Eastlake bin pull. 3/4"t x 4"w; 3 1/4" c/c



ZLW-126B Lost Wax Cast Victorian style rare oak leaf & acorn bin pull 2 3/4"h x 5 "w. Screws at 4" c/c. Scarce.



ZLW-129L **ZLW-130S**

ZLW-129B & ZLW-130S How rare is rare ? To find one original sample is a treat, to find two, in sizes, unique.

Lady Bust Bin Pulls made by P & F Corbin in 1874/5.

ZLW-129L 1.5"H x 4"W
Screws on: 3 3/8 c/c

ZLW-130S 1.5"h x 3 1/4"W
Screws on: 2 5/8 c/c

There are no nicer bin pulls



B-33 Here is a lovely "water-fall" reproduction handle. Note unusual boring is 3 3/4" O/A 5 7/16" x 1 7/16" tall



B-20 Fine cast Louis style pull w/concealed stem mount
OA: 1 1/2"h x 4 1/2"w
2 1/2" c/c boring



E-18B Cast large vertical keyhole: 1" x 4" tall.



E-27 Cast vertical keyhole. 2 5/8" x 1 3/8"

E-18B Cast large vertical keyhole: 1" x 4" tall.



Swivel head small dutch drops **D-5 Series**

D-5A 3/4" wide bow

D-5B 1" wide bow

Both project approx 3/8" Drops supplied with a pan head screw but hanger bolts can be ordered



Period style "swan neck" bails with turned posts (8/32 thread). Bails use 1 3/16" backplates except B-8A at 1" dia. & B-8F at 1 3/8" dia. Precision cast bails--not sand cast.

B-8A 2 1/2" c/c, **B-8B** 3" c/c

B-8C 3 1/2" c/c, **B-8D** 4" c/c

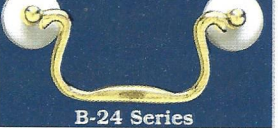
B-8E 5" c/c



Period style "decor swan neck" bails with turned posts (8/32 thread). These bails use 1 3/16" washers except B-8A 1" dia. & B-8F at 1 3/8" dia. Precision cast -not sand cast.

B-9 3" c/c, **B-9B** 3 1/2" c/c

B-9C 4" c/c



Period style "swan neck" bails with turned posts (8/32 thread). These bails use lovely 1 1/4" porcelain backplates.

B-24A 2 1/2" c/c,

B-24B 3" c/c,

B-24C 3 1/2" c/c
B-24D 4" c/c, **B-24F** 5" c/c



The Absolute BEST Louis handles available in America

Finest lost wax castings of both handle and backplate with special turned and milled posts (french style) complete these beautiful sets. Supplied in the French borings and size:

ZLW-143FS Overall 6" wide by 3 1/4" tall. Boring: 3 3/4"

ZLW-144FL Overall 8 3/8"w by 3 1/4" tall. Boring: 4 3/8"

Both sets are antiqued w/- a high/lo finish & Lac. La Superb



E-26 Cast large horizontal keyhole: 1 5/8" x 3 7/8" wide



E-18A Cast large horizontal keyhole: 1 5/8" x 3 7/8" wide

E-26 Cast horizontal keyhole. 2 5/8" x 1 3/8" wide



ZLW-114 Nice Lost Wax French handle 6 7/8" wide x 2" Screws at: 4.5" c/c boring



"Louis Style" Cast brass Bails with cast backplates (2 5/8" x 1 3/8") and lathe turned posts (8/32 thread). Backplates available as matching keyholes (above). Nice quality.

B-7 3 1/2" c/c boring; **B-7A** 3" c/c boring



ZLW-23RNW Fine Lost wax cast brass "french ribbon and wreath" lifting handle. 6" x 3 3/8" tall, Rosettes: 3 7/16" x 1 3/4" 4" c/c boring



B-10 Large cast lifting handle for chests; large drawers; boxes; etc. Handle has stops built in which prevents the handle from lifting past 105°. Overall: 5 3/4". Boring: 4 1/2". Nickel Available



B-11 Our only 6" Boring bail. A rustic sand cast heavy bail with large washers (1 5/8" x 1 1/4")

D-3 Door or drawer backplate (7" x 3/4") sand cast with like knob (top 1 5/8" x 1 1/4" finished to match B-11