



**ZLW-35FE** Accolades do not do this lovely Lost Wax cast brass doorknocker justice. French empire, it is loaded with designs including a twin griffin center; scallop shell; scrolls, ascathus leaves. Meas: 9" x 2 1/2" and projects: 4" at the knob. Backplate: 1 7/8" x 2 1/4"



**ZLW-30WR** Ring only style O/A ht: 5 1/4"

Rear screw mounting plate: 7/8" x 2 1/4"

Ring: 4 5/16"ht x 4" w.

**ZLW-31WRP** Our ZLW-30WR ring with matching backplate Dia: 5". 6 5/8" tall. Thru door mounting

**Doorknocker M-77A** Small

5/8" dia by 3/8" tall

**M-77B** Large 1 1/4" dia by 3/4" tall

Both threaded 1/4w20



**ZLW-27MGM** How do you get a more impressive lion door knocker than this ?? You don't!! Provenance: MGM Studios, in Hollywood, had an auction of props. One prop was the original antique sample of this fine Lost Wax Cast brass doorknocker which we reproduced, right down to the MGM property label affixed to the top (not visible after installation-unless-you use a ladder to stand above it) Majestic size: 8" wide, 9 5/8" tall and projects 2 3/4". Weighs 5lbs. Awesome!



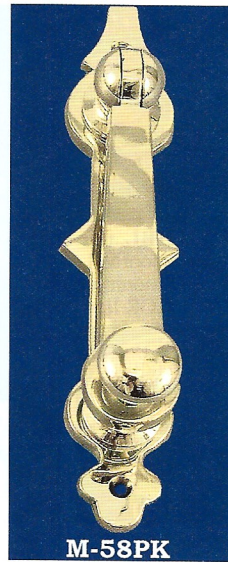
**ZLW-32LHN**



**ZLW-33SHN**

**M-59MK**

Cast brass doorknocker Nice Victorian motif which measures: 3 3/4" wide by 7 1/4" in overall length Not the quality of Lost Wax casting but still, a nice appearance and well worth the money. Mounts with 3 rear screws (supplied)



**M-58PK**

**M-58PK** Simple but elegant brass doorknocker. Solid brass this item contains 6 individual parts..all mirror polished. 9 5/16" tall x 2 3/4" wide Mounts with 2 surface screws...not necessary to drill thru the door.

Victorian "hand" motif doorknockers, both Lost Wax cast

**ZLW-32LHN** 5 1/2" x 2 1/4" wide; Backplate: 1 7/8" x 2 1/4"

**ZLW-33SHN** 3" x 1 1/2" Mounting backplate: 1 1/4" x 1 1/2"

Both supplied with impact anvil



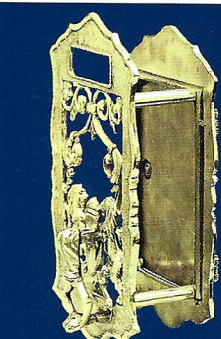
**ZLW-34EL**

**ZLW-34EL** An aesthetic doorknocker? We knew that they had to be made, but we were still suprised and very pleased when we found the lovely antique sample from which our brass reproduction was made. Beautifully Lost Wax Cast. 9 5/16" tall x 2 3/4" wide Mounts with 2 rear thru door screws at c/c



**ZLW-29MD**

**ZLW-29MD** Lost Wax cast, classic Roman, female mask doorknocker. Nice and heavy measures: 6 1/4" tall by 5" wide. Mounts with 2 threaded rods (1/4w20 thread) and acorn nuts thru the door which are supplied as well as the striking anvil for the knocker.



**ZLW-25LEO** Assembled



**M-59 MK**

Here's an elegant and security type solution to the "who's at the door" question. Solid Brass-Lost Wax Cast Grills sets. Adjustable for doors from 1" to unlimited thickness. (Up to 2" thick with screws supplied.) Can be used on thicker doors by buying longer 8/32 screws from the local hardware store. Both sets are completely lost wax cast for quality detail. Remember: Once you open your door to a total stranger, your safety is gone.

**ZLW-24HRT** Specs: hole required: 5" x 3 1/8"; OA Front plate: 9" x 4 7/16", OA Back plate: 5 7/8" x 3 7/8"

**ZLW-25LEO** Specs: hole required: 5 13/16" x 3 13/16"; OA Front plate: 9 1/4" x 5 1/4", OA Backplate: 8 1/2" x 5 1/4"

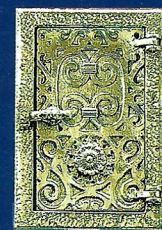
To add decorative lining side panels inside the hole of the door, cut the hole larger by only the thickness of the decor panels to be added. Both grill sets have ridges to hold lining panels in place.



**ZLW-24HRT** Assembled



**Outside Door Plate**



**Inside Door Plate**



**ZLW-19RB.** Come hark now ye lads and lassies of Scots decent. If ye be true scots, ya kin, mind yu'll neid good ole Roby on ye'an door for bonnie luck. Robert Burns doorknocker is lost wax, with a thistle motif and the crown of Scotland-a wreath of heather- in nice detail. 5" tall, 3 1/4" wide. A grand impression for those New Year's "first footers".



**ZLW-28LH**

**ZLW-28LH** Of the offerings of mid-size lion head doorknockers on the market, this one stands far above all the rest. Lost Wax Cast from a Lost Wax antique sample. Superb detail...you can even see our cat's whiskers. Size: 6" long x 3 7/8" Supplied complete with the impact anvil



**Outside Door Plate**



**Inside Door Plate**



**ZLW-66B**

**ZLW-66B** Rococo Lost Wax cast brass doorknocker with, cherub type, face center. 7" tall x 5 1/2" No other like it anywhere that we know.