



ZLW-274K

ZLW-275 Series

Lost Wax cast brass

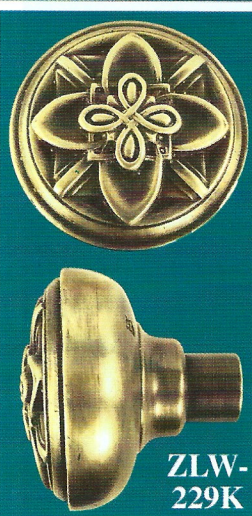
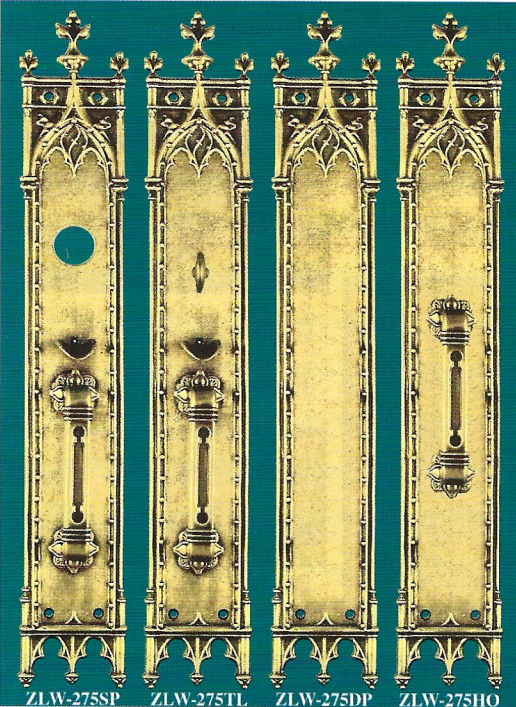
ZLW-275SP Yale Plate

ZLW-275TL Turn latch plate. The SP and TL work with our lock L-9SP (winter 99 catalog, page 26)

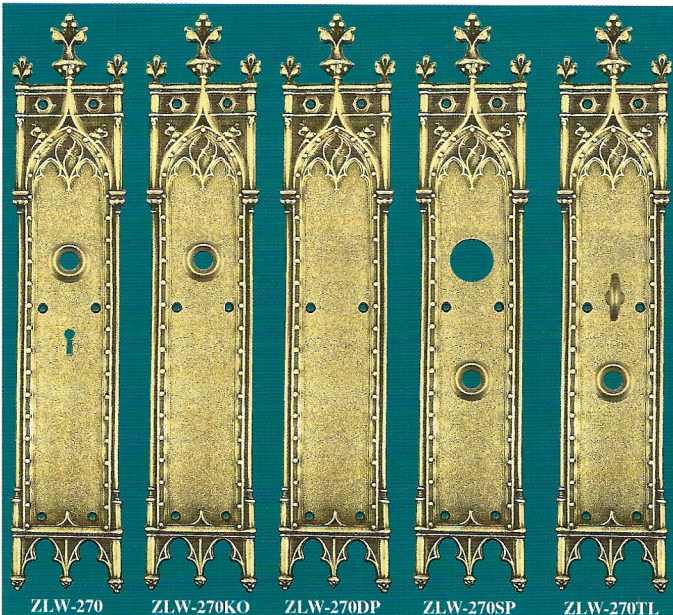
ZLW-275DP An outstanding large push plate.

ZLW-275HO Handle only plate without mechanism

All plates are 3 5/8" wide by 22 3/4" tall. All hardware items in the "Amiens" gothic series are antiqued; lacquered and matching. Very impressive.

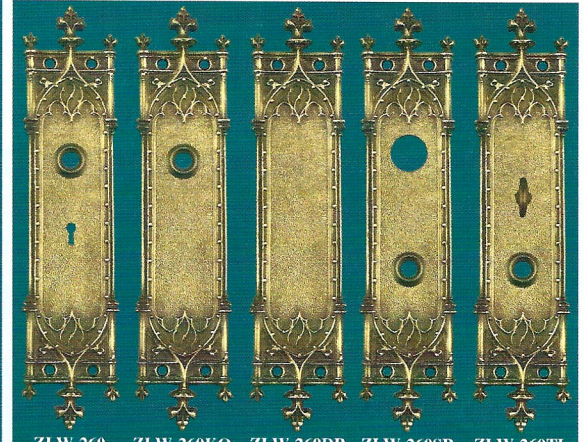


ZLW-229K



ZLW-270 ZLW-270KO ZLW-270DP ZLW-270SP ZLW-270TL

Authentic Gothic



ZLW-260 ZLW-260KO ZLW-260DP ZLW-260SP ZLW-260TL

Glass door knob colors match Curtain Tie Backs

The "Amiens Design"

Gothic door Hardware--antique finished to match. Lost Wax cast Solid Brass

ZLW-227BL Lovely doorbell push with real bakelite push button. 6 1/2" tall by 2 1/2" wide

ZLW-260 Doorplates 13 5/8" tall by 3" wide

ZLW-270 Doorplates 18 5/8" tall by 3 5/8" wide

Doorplates: Distances for doorknobs; keyholes receivers etc are identical to those on pg 28-main winter 99 catalog

ZLW-274K Amiens design door knobs. Lost Wax cast brass. Antique hi/lo finish. 2 1/8" dia and 2 1/4" tall. Square threaded spindle supplied.



ZLW-227BL



Cobalt Blue Glass L-119KB



White Milk Glass L-127KW



Dark Sea Green Glass L-120KG

L-119KB & L-120KG & L-127KW

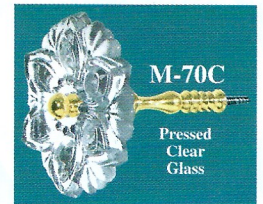
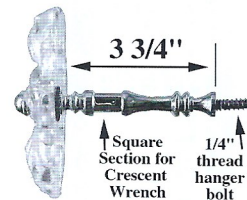
Colored glass doorknobs

All sets are 2" dia by 2 1/2" tall. Solid Brass bases.

L-119KB This sea green glass knob is dark. We put a light behind it when taking the picture to see highlights. The sun coming thru this knob would be very nice indeed.

L-120KB Cobalt blue doorknob. Good deep dark rich cobalt blue color.

L-127KW White Milk glass doorknob. A very popular Victorian/Edwardian choice.



M-70C Pressed Clear Glass



M-75W Victorian Milk Glass White



M-71A Amethyst Glass



M-72G Sea Green glass



M-73B Cobalt Blue Glass

Glass Curtain Tie Backs with Solid Brass mounting stems

All Tie back glass heads meas: 4 3/8" dia. Brass stems are solid brass, lathe turned from solid bar stock so they are as nice as can be. Others on the market are cast pot metal and of such low quality that they can break. Our stem even has a squared milled section where a crescent wrench can be applied when mounting. No nasty teeth marks from pliers. Note the side view B&W illustration, above, for sizes & other information. Best ones on the market--bar none.

"Byzantine Style" Gothic Hardware

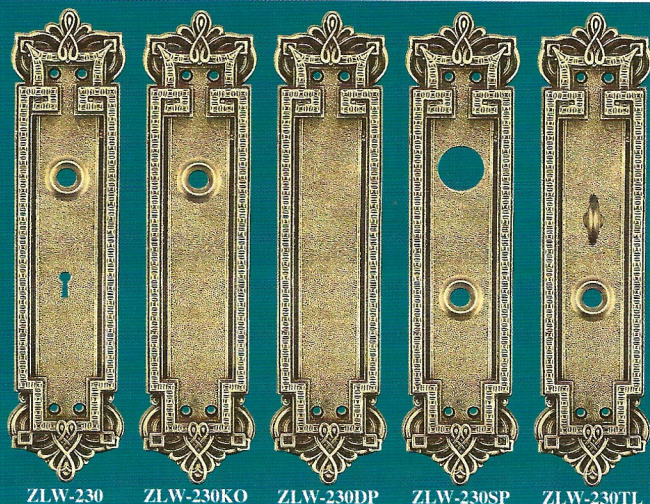
Lost Wax cast brass; antique finished

ZLW-229K Byzantine Gothic pattern door knobs. 2 3/8" dia and 2 1/8" tall. Supplied with our square threaded spindle.

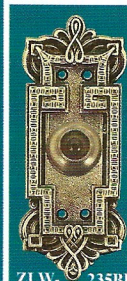
ZLW-230 Byzantine Gothic doorplates

All plates are 12 3/8" tall by 2 3/4" wide. Distances of doorknobs; keyholes etc are identical to those on page 28 main catalog.

ZLW-235BL Doorbell 8" tall by 2 3/4" wide
What a nice treat to find these matching pieces



ZLW-230 ZLW-230KO ZLW-230DP ZLW-230SP ZLW-230TL



ZLW-235BL