

**Newel Post Lights**...also called, in early times, "Pillar Lights". These lights were used on light shop counters and were either of the fixed variety or portable connected to the gas source with a rubber hose as early as 1844. More importantly, however, for the homeowner, they were used on the Newel Post at the bottom of the stairs and many times on the post where the stairs changed direction. In very large Victorian homes, that had extensive rails around the stairways, they would be installed on a significant post which occurred every 10 or 15 feet, to supplement hall or wall lighting. We present below several ages of Newel Post lights starting with our interpretation of Starr-Fellows 1857 lights, moving to later Victorian lights by R. Williamson and victorian figural.



905-TRG-NW



901-MRG-NW



907-PRG-NW

63

**299-FGE-NW** Pierced body Newel Post Light matching to 518 chandelier. Both made by Gibson Gas Fixture Works, Circa 1890. Made originally as a gas/electric combo fixture, it takes one gas shade with 4" fitter and one electric with a 2 1/4" fitter. Ht: 31.5" Lovely work & fine Lost Wax castings.

**901-MRG-NW** Single light Starr-Fellows inspired newel post light. Beautiful addition to any stairway. Ht: 32" with shade, Spread: 11"

**905-TRG-NW** Triple light Starr-Fellows inspired newel post light. All lost wax castings matching the 900 series. Height: 31" with shade, Spread: 30"

**907-PRG-NW** Five light Starr-Fellows inspired newel post light. Beautiful addition to any stairway. Height: 38" with shades, Spread: 35"

Our designed dish crossbar allows these newel post lights to be mounted directly to an electrical box or directly to the wood banister top with wood screws. These three rococo newel post lights match our 900 series Starr, Fellows ceiling lights. A breath-taking hallway results when using them together. All three Starr-Fellow type Newel posts have 2 5/8" fitters. Shade choices are: 046G, 061G, 086G Each socket is rated 100 watts each.



312-QNW-SA



311-NLW-MG



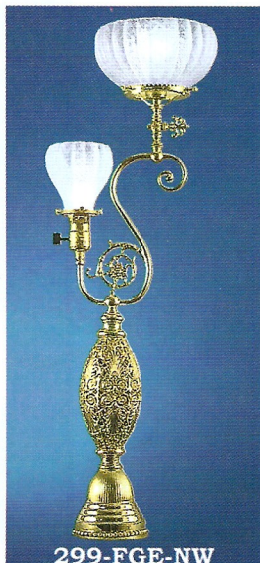
313-NWL-QG



633-AES-NW



634-MAG-NW



299-FGE-NW

Reproduced from lights made by R. Williamson & Co., Chicago, Ill. cat #14, Circa 1890

**311-NWL-MG** Ht: 32", Base 4 3/4", Shortest: 19", Fitter: 4"

**312-QNW-SA** Ht: 33.5", Base 4 3/4", Shortest: 19", sold complete with the glass gas candles and drip savers but w/o center shade

**313-NWL-QG** Ht: 33.5", Base 4 3/4", Shortest: 23", Fitter: 4"

**Figural gas Newel Posts from 1860 to 1890**

**320-ANW-GS** Silicon Bronze Large Cherub Newel post. 36" tall; Base: 5" dia with mounting plate. Fitter is 4" and mounted on a swivel for adjustment.

**633-AES-NW** Lost Wax cast brass male messenger

**634-MAG-NW** Lost Wax brass female messenger

Both 633 & 634 are: Circa 1860-70, Meas: 29" tall (with our ball shades). Mounting bases: 4 3/4" dia. Both have a disguised on/off switch. See the flower below the feet? The center part of the flower is the switch. Fitter is the old 2 5/8" early gas.

*The nicest Figural Newel post lights available.*



320-ANW-GS