

C-1PW C-1 C-1AP C-1A C-1CPW C-1C

"Philly Drive Stem" Casters. All mounted by lightly hammering in the 3/8" dia drive stem

Stock#	Øwheel	Wheel type	Stem length	mounting screw plate	Raises Furniture	Load
C-1	3/4"	brass	1 1/2"	none	1"	110#
C-1PW	3/4"	porcelain	1 1/2"	none	1"	90#
C-1A	1"	brass	1"	Ø 1"	1 3/4"	160#
C-1AP	1"	porcelain	1"	Ø 1"	1 3/4"	100#
C-1C	1 3/8"	brass	1"	Ø 1"	2"	140#
C-1CPW	1 3/8"	porcelain	1"	Ø 1"	2"	100#



C-3AR C-3BR C-3CR C-6 C-2AR C-2BR C-2CR

Tapered brass caster cups to give furniture a brass terminal end to a leg without casters wheels
C-3AR 3/4" round cup opening; 7/8" tall
C-3BR 1" round cup opening: 1" tall
C-3CR 1 1/4" round cup opening; 1 5/16" tall
C-6 (Stamped) Cup: 7/8" bottom: 3/4" tall: 1 1/2"
C-2AR 3/4" square cup opening; 7/8" tall
C-2BR " square cup opening; " tall
C-2CR 1 1/4" square cup opening: 1 5/16" tall

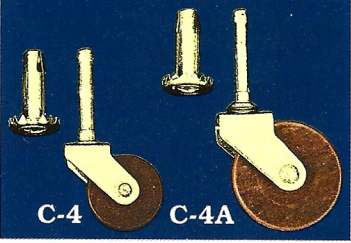


C-5L C-5 C-5S C-8Z C-8Y C-8X

Toe Caps....Refer to the drawing (lower right) for key to measurements

	W-2	W-1	H		W-2	W-1	H
C-5S	7/8"	3/4"	3/4"	C-8X	7/8"	7/8"	1 1/2"
C-5	1 3/16"	1 3/16"	1"	C-8Y	1"	1 1/8"	1 7/8"
C-5L	1 3/4"	1 1/2"	1 1/2"	C-8Z	1 7/16"	1 1/2"	2"

C-5 series are heavy cast paw feet. Since they are sand cast, some "slight" variations will occur. C-8 series are deep drawn from 0.5mm (1/32") sheet metal.



C-4 C-4A

C-4 1 1/8" dia hardwood wheel, steel frame caster-raises furniture 1 1/2"
C-4A 1 5/8" dia hardwood wheel, steel frame caster-raises pcs 1 3/4". Both casters are identical to most used Circa 1900. Both come complete with steel sleeves but many times these casters will snap into the old sleeves still in old furniture.

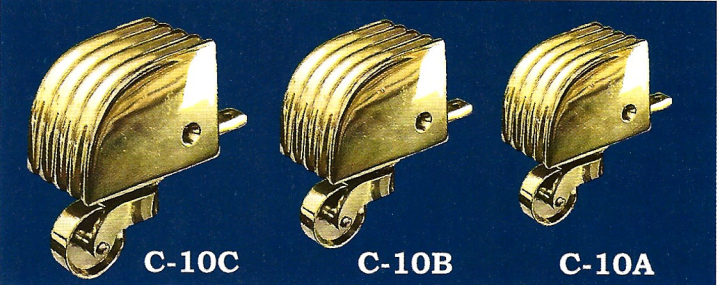
Heavy Victorian Style Cast Paw Foot Casters

- C-9A** W1 = 7/8" W2 = 1" H = 3/4", D = 1 1/2" Wheel Ø = 3/4" RF = 1 1/2"
- C-9B** W1 = 1 1/8" W2 = 1 1/4" H = 1", D = 2" Wheel Ø = 1" RF = 1 3/4"
- C-9C** W1 = 1 1/8" W2 = 1 3/8" H = 1", D = 2 3/8" Wheel Ø = 1 1/4" RF = 1 13/16"

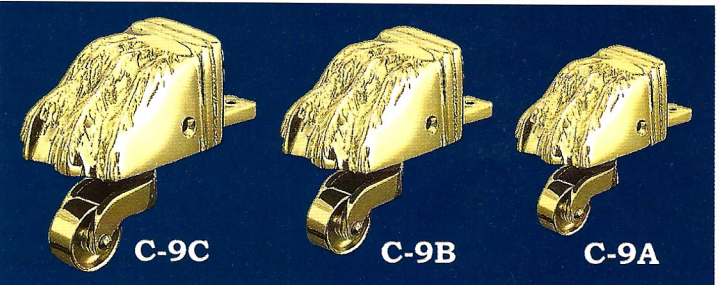
Heavy Regency Style Cast Reeded Foot Casters

- C-10A** W1 & W2 = 1 1/16" H = 1", D = 1 7/8" Wheel Ø 3/4" RF = 1 1/4"
- C-10B** W1 = 1 1/8" W2 = 1 5/16" H = 1 1/4" D = 1 7/8" Wheel Ø 1" RF = 1 5/8"
- C-10C** W1 & W2 = 1 5/16" H = 1 3/8" D = 2 3/16" Wheel Ø 1 1/4" RF = 1 5/8"

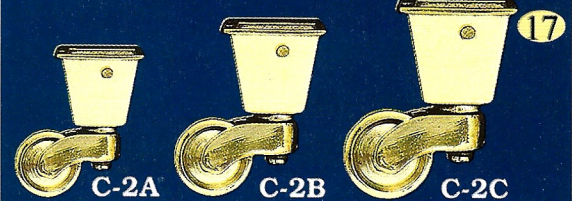
Finer casters cannot be found. Carefully sand cast with precision cores and finished thru 5 processes. Internal Measurements can vary slightly due to the sand casting nature of these products.



C-10C C-10B C-10A

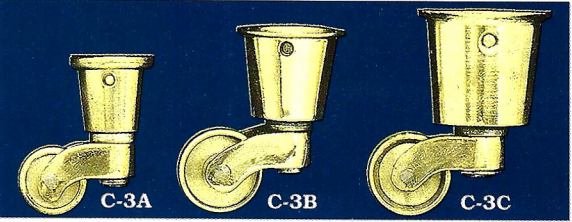


C-9C C-9B C-9A



Brass Square Tapered Cup Casters-Load capacity is per each

Stock #	ØWheel	ØCup Opening	Raises Furniture	Load
C-2A	3/4"	3/4" square	1"	70#
C-2B	1"	1" square	1 1/4"	100#
C-2C	1 1/4"	1 1/4" square	1 1/2"	100#



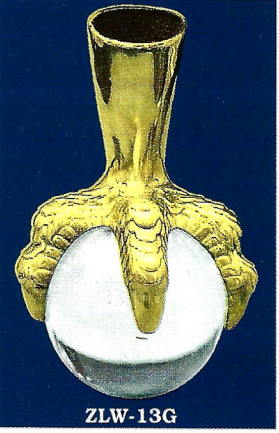
Brass Round Tapered Cup Casters- Load capacity is per each

Stock #	ØWheel	Ø.Cup Opening	Raises Furniture	Load
C-3A	3/4"	3/4"	1	80#
C-3B	1"	1"	1 1/4"	90#
C-3C	1 1/4"	1 1/4"	1 1/2"	90#



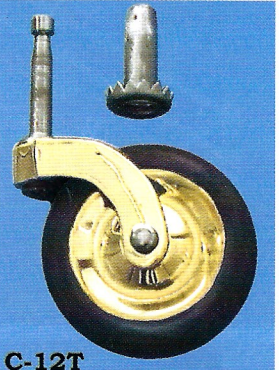
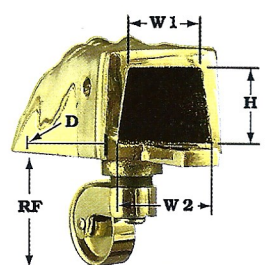
C-7A C-7B

C-7A Cast Brass with "real glass" ball insert leg terminals. Round leg top opening 3/4" on 1 1/4" ball Overall ht: 4 1/4"
C-7B Round leg top opening of 1 1/8" on 1 3/4" ball Overall ht: 5 1/8". Caster leg receivers are tapered



ZLW-13G Lost Wax Cast brass ball and claw foot. Big and beautiful, this claw uses a 3" solid GLASS ball--unlike cheap copies elsewhere that use a plastic ball. Size: 5 3/4" OH, Top Opening: 1 3/8" Glass ball has bubbles and swirls because it is hand poured; just like the antiques ones.

C-12T Finest tea trolley caster available in America. Solid brass center w/-rubber wheel. Steel stem and insert. Wheel dia: 2 1/2", raises furniture 2 1/2". Same receiver as C-4.



C-12T