



ZLW-206K

**ZLW-205 & ZLW-206K
Art Nouveau Series**

These are so amazing. Art Nouveau Lost Wax cast brass large door plates with matching door knobs. Antique originals are marked "Russwin" (formerly R & E). We assume that the originals were custom made; not a stock item. The Henry Morris influence is strong in this design. Door plates meas: 2 5/8" x 17 3/8". SP & TL plates use our L-9SP lock set. Distance ZLW-205: knob hole to round bit of keyhole is 2 1/4" c/c; can use our L-9 or L-53ML. Both knob and plates are Hi/Lo antique finish and lacquered. **ZLW-206K** In our opinion, for true spirit of the Nouveau period, there cannot be a finer doorknob anywhere. 2 1/4" dia by 1 3/4" tall. Supplied with threaded square spindle and the combination of this knob mounted on ZLW-205 series plates is "nouveau perfectique".



ZLW-205 ZLW-205KO ZLW-205DP ZLW-205SP ZLW-205TL

ZLW-202K Another outstanding antique "find". This wonderful giant lion's head brass door knob was found still mounted on an original *Schlage* display board. It was priced over \$200 per knob. Now for those who cannot get enough of this particular "king of the jungle" this could be the largest lion doorknob available outside Africa. It is a whopping 3 3/8" diameter and is 2 7/8" tall & weighs in at about 1 1/2 pounds. You might require the spring helper (L-62H), on page 31 of our catalog, installed on the door backplate due to the knob's weight. But, after you're done, your door will roaaarr !

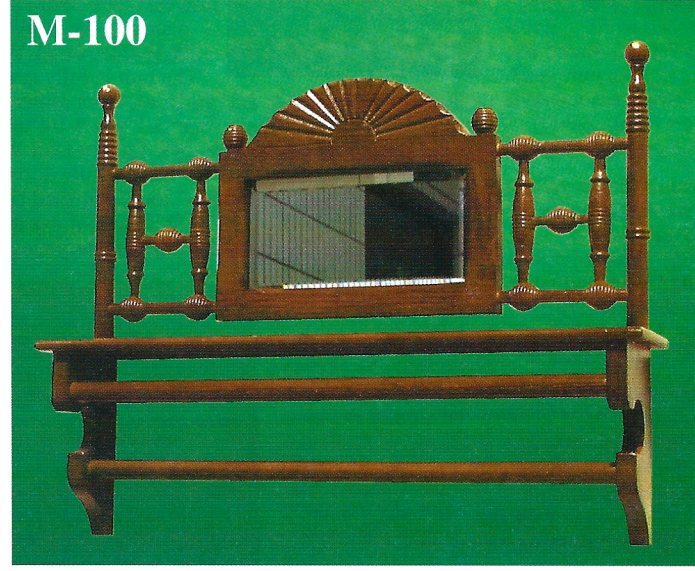


ZLW-202K

ZLW-300SP & ZLW-301HO

Scarce reproduction entrance door plates made by Sargent C. 1900. Very nice design incorporating the thumb latch into the handle design. And yes...while the cylinder hole looks off center on the 300 plate, once a cylinder is installed, the heaviness of the top, (cylinder plus thin wreath), is balanced by the thicker wreath at the bottom. If it is desired to use the 300 thumb latch plate on both sides of the door, you can achieved the turn latch on the inside of the door with the L-7500 series. This series allows for various thicknesses of doors and in conjunction with our lock L-9SP/DL you would have an approved code installation. The **ZLW-301HO** plate is simply a door pull. Both plates measure: 3 1/2" by 20". Lost Wax cast brass, darkened and finished in a hi/lo treatment, then lacquered, to look old and mellow.

M-100 Solid oak, late Victorian, bobbin mirror shelf and towel rack. An extremely nice reproduction directly from an antique. Bevelled mirror (sorry for the image of the backyard, of our office, in the mirror). Spool design with excellent turnings. Colored medium oak. Overall size: 25" wide x 19 1/2" tall. Shelf is 3 3/4" deep. Nice piece in bath or kitchen

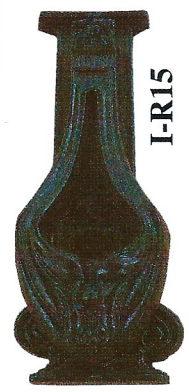


M-100



ZLW-4MIR

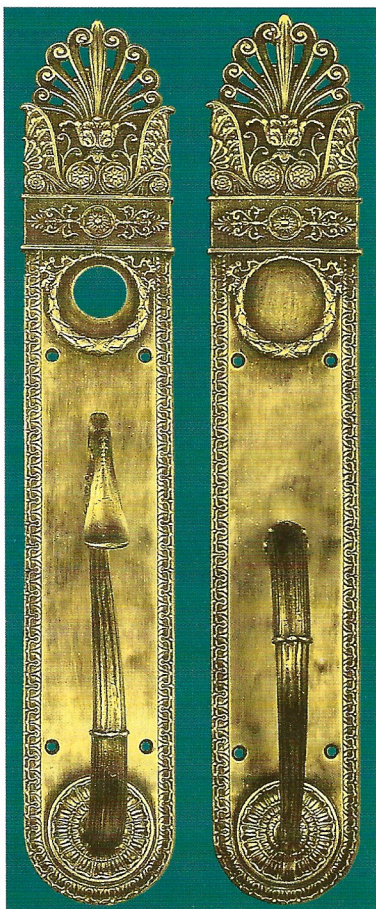
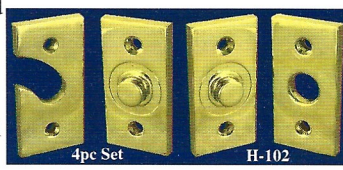
ZLW-4MIR Lovely Louis style, asymmetrical, Lost Wax cast brass wall mirror. Detail is so nice with a full cupid's head surmounted above the mirror and a scenic classical grouping below the mirror. Just an outstanding hanging mirror for that special lady. Meas: 6" in length, by 12 1/2" at the widest point. The surmounted part of the mirror projects out 6 1/2". This mid size of this mirror and the decor fits well with all Victorian furnishings. Really...cannot find a nicer mirror of this style anywhere. Hi/lo brass finish.



I-R15

H-102 set Solid Cast Brass, heavy duty, pivot hinges for transom windows. These bruts will hold a 100 lb window easily-smaller ones too. Comes as a set of four pieces..enough to mount one window. Dimensions: Plate size: 2 1/2" x 1 1/4" and 1/4" thick. Pin is near Ø 1/2" and protrudes 1/4".

Our philosophy: if we are going to make one transom pivot hinge--make only the strongest & best quality **I-R15** Authentic Arts & Crafts cast iron door knocker from New England Nicely recreated 7 1/2" tall by 3 1/4" wide. Thru door screw (bolt) mounting-vertical 5 1/2" c/c



ZLW-300SP ZLW-301HO