

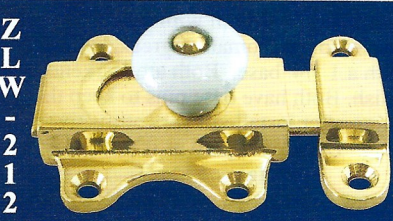


ZLW-231B



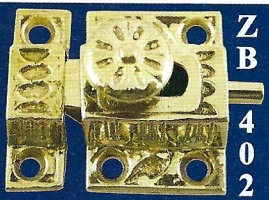
ZLW-401P

ZLW-212 Plain Lost Wax cast latch with real porcelain knob. Latch is 1 5/8" long while catch is a mere 1/2" long & both are 1 3/4" wide. Bolt has a 9/16" good long reach.



ZLW-212

Often requested large slide bolt...very nicely Lost Wax cast solid brass, polished, Eastlake Circa 1880. 1 1/4" wide. Catch meas: 1 1/4" by 1 3/8", Latch meas: 1 1/4" by 4 3/4". Bolt shoots 7/8" knob protrudes: 1"

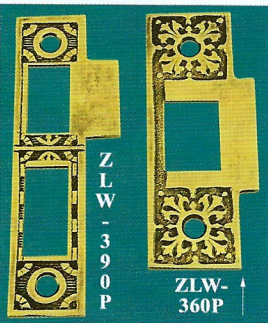


ZLW-401P

ZLW-401P Lost Wax cast latch with real porcelain knob. Latch is 1 7/8" long while catch is 7/8" long and both are 1 1/4" wide. Bolt is 1/4" long
ZLW-402 Lost Wax cutey cast latch. Latch is only 1" long while catch is 9/16" long and both are 1 3/8" wide. Bolt protrusion is 1/4".

ZLW-360P & ZLW-390P

Two catches for victorian locks. Both are Lost Wax cast and darkened to match antiques. **ZLW-360P** is for latch only type locks and is 3 3/4" tall by 1 1/2" wide. Part that goes on the jam is 1 1/4" wide with a 1/4" protruding lip. Hole is 1" t by 3/4" w & starts 1 3/8" down the plate.



ZLW-390P

ZLW-390P measurements are a bit more complicated. Overall it is 4 1/4" tall by 1 3/8" wide. Part that goes on the jam is 1" wide with a 3/8" protruding tongue. Top latch hole is: 1" t by 1/2" w. Bottom bolt hole is: 1 1/4" t by 1/2" w. The top hole starts about 3/4" down the plate. The two holes are separated by a metal band 1/2" wide



ZLW-269BL

L-96 Adding to our Art Deco designs...here we have a smaller rose. 2 3/8" wide by 4 1/2" tall. Receives our deco knob L-52K on pg 30 of the catalog. It's planned to make this in Nickel & as a doorbell too.

ZLW-269BL Here's a grate doorbell for either the Elk's Club Or wildlife enthusiasts. 3D elk head at the top and bakelite button doorbell push. Meas: 2 3/4" wide by 5 1/4" tall and projects 1 1/4". Solid brass lost wax casting finished in an antique hi/lo finish that is just lovely.

© AAB Co 2001 design



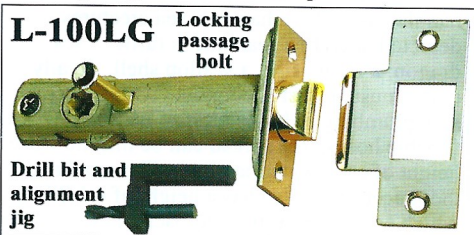
L-96

L-100LG & L-100-1

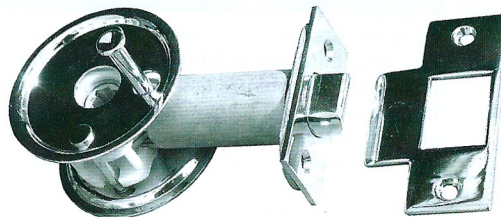
Two products to be used together .OR. by themselves. **L-100LG**...locking passage bolt. Made of brass...not zinc...and comes with "star broached" hub. 2 3/4" backset **not** 2 1/4". Tube is 7/8" dia normally use a 1" drill. Face plate (1" by 2 1/4") is loose so lock can be reversed or changed for the correct "hand" of door. Catch plate is 2 3/4" tall by 1 5/8" overall...with actual part on the jam being 1" wide w/5/8" protruding tongue. This latch requires a

split spindle like our L-S3 to work properly. This is because there are two halves to the doorknob turning hub..the outside half which locks & the inside half which is un-locked. If you use a solid spindle, anyone on the outside can open the door, since it will engage the inside un-locked half hub as well. Outside & inside spindles must be able to work independently to have the locking function.

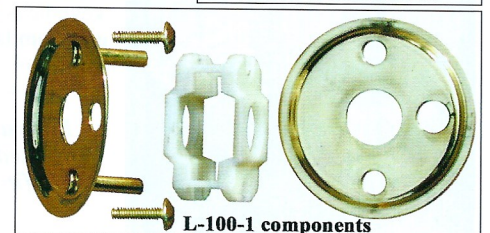
L-100-1 This item changes the modern ugly round holes in doors so that antique hardware can be used. This adapter plate will work with our L-6 or our new L-100LG. It cannot work with other companies latches that are more than 3/4" thick. Door must be a minimum of 1 1/8" thick. Plastic sleeve slides over latch body and is held in position by screwing metal halves together. Hole is there for locking pin of L-100-1.



L-100LG Locking passage bolt
Drill bit and alignment jig



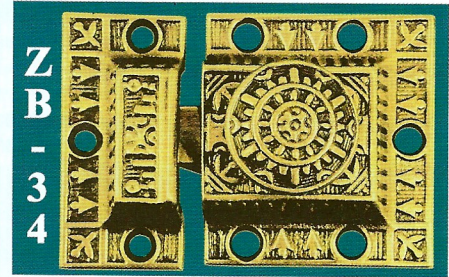
L-100LG with L-100-1



L-100-1 assembled
L-100-1 components



ZB-33



ZB-34

Two Lost Wax Cast Windsor pattern latches--matching all Windsor items

ZB-33 Windsor patter Lost Wax cast latch with "T" handle. Latch is 1 1/2" long while catch is 9/16" long and both are 2 3/16" wide. Bolt is 5/16" long. Maximum projection of this latch is 1 3/16".

ZB-34 Windsor patter Lost Wax cast latch with round knob. Latch is 2" long while catch is 1" long and both are 2 1/8" wide. Bolt is 5/16" long. Maximum projection of this latch is 1 1/4".

L-135K A long time coming, but finally here. Our Crystal Octagonal knob And Now...with finely cut design top. Very pleasing to the eye. Same dimensions as the L-45K on page 16 of the catalog. Just a touch nicer.



Hand Cut pattern in the top of this crystal knob

L-135K

Sold set as shown